



Designer & manufacturer since 1987

THE BEST SOLUTIONS FOR OUTFITTING YOUR BOAT



Discover a complete range of equipment for your boat :



tested and approved by offshore yacht racers



innovative and versatile

easy to use

high Quality



www.outils-oceans.com



SUMMARY

STANDARDS PRODUCTS



The Mast Ladder

Éléments de base • Rallonge • Kit sécurité

page 4



Emergency Ladder

page 7



BAB, the Additional Safety Kit

page 9



Fender

page 12



Pontoon Fenders

page 13



Open Rope Bags

page 14



Closed Rope Bags

page 16



Storage Lockers

page 18



Lee cloth

page 20



Winch Handle Holders

page 21

SOMMAIRE (SUITE)



Water bottle Holder

page 23



Guard line, Mooring line and Turnbuckle protections

page 24



RACING Products

page 27



Waterproof bags Zulupack

page 31



Bags

Stacking Bags • Tool bags

page 32

CUSTOM PRODUCTS



Open rope bags, anchor bags, interior storage, deck hardware protections, fenders, lee cloths and bunks, stacking bags, covers,...

page 55

MAGIC-MAT®

THE MAST LADDER : THE EASIEST WAY TO GO ALOFT BY YOURSELF



The Magic Mast ladder is the easiest way to go aloft by yourself. The alternating steps and the «platform» at the top, reinforced with polyethylene, provides comfort and safety.

The Magic Mast ladder is available in length of 3,7 or 9 meters and comes in a large bag. It is designed to be extended (2,3 and 7 meters) and thus adapts to the height of your mast.

You can do all the work on your mast, change lights, work on spreaders, set a weathervane, with the additional equipment : work harness and fall protection.

TIPS FOR USING MAGIC-MAT®



Attach the mainsail, spinnaker or genoa halyard to the eye at the top of the mast ladder (the side where there are two steps facing).

Hoist the halyard with the mast ladder.

Remove the twists.



Attach the eye at the bottom to the gooseneck or a fitting on the mast.

Tension the halyard.

To climb :

- hands around the mast,
- feet against the mast, push your body against your feet, once to the right and once to the left and so on. This requires a slight rotation of the body around the mast.



When the right foot pushes on the mast, you're on the right side of the mast, when the left foot pushes on the mast you're on the left side of the mast.



At the masthead, wedge your feet in the steps, your back is supported by the harness, and both your hands are free to work.

Your arms do not get tired as you're above your «work».



Two complementary and essential accessories bring you the best security for working alone : the work harness and the fall protection.

The fall protection is secured between a halyard and the harness : it limits your fall to 80 cm during your ascent and descent.

This package allows you to sit in the harness as well as relax during your ascent and descent.



Flash this code to see the video..

To choose the combination of mast ladder and extension necessary for your boat, you need the distance between the boom and the mast head (this distance corresponds to the «P»)

P= 30 m = 1 mast ladder of 9 m + 3 extensions of 7 m

P= 26 m = 1 mast ladder of 9 m + 2 extensions of 7 m + 1 extension of 3 m

P= 25 m = 1 mast ladder of 9 m + 2 extensions of 7 m + 1 extension of 2 m

P= 24 m = 1 mast ladder of 9 m + 1 extension of 7 m + 2 extensions of 3 m + 1 extension of 2 m

P= 23 m = 1 mast ladder of 9 m + 2 extensions of 7 m

P= 22 m = 1 mast ladder of 9 m + 1 extension of 7 m + 2 extensions of 3 m

P= 21 m = 1 mast ladder of 9 m + 1 extension of 7 m + 1 extension of 3 m + 1 extension of 2 m

P= 20 m = 1 mast ladder of 9 m + 1 extension of 7 m + 2 extensions of 2 m

P= 19 m = 1 mast ladder of 9 m + 1 extension of 7 m + 1 extension of 3 m

P= 18 m = 1 mast ladder of 9 m + 1 extension of 7 m + 1 extension of 2 m

P= 17 m = 1 mast ladder of 7 m + 1 extension of 7 m + 1 extension of 3 m

P= 16 m = 1 mast ladder of 9 m + 1 extension of 7 m

P= 15 m = 1 mast ladder of 9 m + 2 extensions of 3 m

P= 14 m = 1 mast ladder of 9 m + 1 extension of 3 m + 1 extension 2 m

P= 13 m = 1 mast ladder of 9 m + 2 extensions of 2 m

P= 12 m = 1 mast ladder of 9 m + 1 extension of 3 m

P= 11 m = 1 mast ladder of 9 m + 1 extension of 2 m

P= 10 m = 1 mast ladder of 7 m + 1 extension of 3 m

P= 9 m = 1 mast ladder of 9 m

P= 8 m = 1 mast ladder of 3 m + 1 extension of 3 m + 1 extension 2 m



Anti Falling

Work Harness

SECURITY PACK ANTI-FALLING AND WORK HARNESS

Developed and adapted for your security when you climb aloft alone with you mast ladder.



ERGONOMIC AND EFFICIENT

This security set is indispensable. It allows you to rest while climbing, to reach the spreader tips...



EASY INSTALLATION

Made with resistant materials which can easily withstand the marine environment.

Anti-Falling

Reference : AC

Weight: 0.162 kg

Characteristics : Anti-chute made of aluminium

Work Harness

Reference : HW

Weight: 0.75 kg

Characteristics : Body made of polyethylene foam recovered with polyester. Polypropylene webbing, loops in polyamide carabiner in stainless steel.

SECURITY PACK

ANTI-FALLING AND WORK HARNESS

A subtle marriage between a harness and a bosons chair, the work harness complements the mast ladder.

It allows you to work standing on the platform at the top of the mast ladder, resting on your two feet, back supported by the wide belt. The long tether around the mast will allow you to adjust your position.

The belt will allow you to sit and work suspended by a halyard and the anti-fall blocker. So you can reach the ends of the spreaders, or come down the back or head stay, for comfort and for you to rest.

This accessory, original for mountaineering, brings you 100% safety. However take care after each use to store it in its cover and preferably in the chart table.



Easy to use, it is used on a free halyard, or a spare line that is hoisted with the mast ladder.

During your ascent, the anti-falling accompanies you and instantly retains you in the case of a problem.

To come down, the security level system will force you to think of a simple gesture, to follow it down.

Your Retailer



THE ORIGINAL
CREATION



ESR27350,11E,TA

ES27295,9E,TA

RESCUE RE-BOARDING LADDER

Easy to install and easy to use,
Magic-Reboard is designed to reboard unaided in complete security.



CONFORMITY & ADAPTABILITY

In conformity with the norme EN/ISO 15085 and the european directive 94/25/CE,
It adapts to all types and sizes of boats.
Easy to install, cow hitch the reboarding ladder around the stern rail.



SIMPLICITY & RELIABILITY

- Easy to install on the side of the stern rail, its operation is sure and safe :
- the small line when pulled opens the box to deploy the ladder completely,
 - once deployed at least three steps are in the water,
 - the steps are wide and reinforced to facilitate climbing back aboard.

Reference : ES27295,9E,TA
Box dimensions : L27 x H17 x E05 cm
Ladder dimensions : L25 x H295 cm
Number of steps : 9
Color : white and black
Weight : 1.1 Kg

Reference : ESR27350,11E,TA
Box dimensions : L27 x H25 x E06 cm
Ladder dimensions : L25 x H350 cm
Number of steps : 11
Color : white and black
Weight : 1.8Kg

Features : Installation by cow hitch around the stern rail, box closed by flap and press studs, fluorescent band, opening with small line, ladder with 9 or 11 steps depending on model, 2nd floap at the back of the box closed by inox screw and nut.

Materials : ladder in polyester weaving, semi-rigid or rigid reinforcement (depending on model) in polyethylen, box in PVC coated polyester double sides, back in polyethylene.

ES27295 : reinforcement in polyethylen 1.8 mm thickness

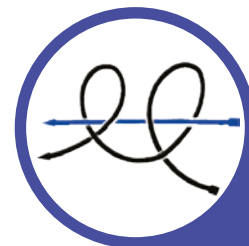
ESR27350 : rigid rungs made of 2 acrylic rings in a strap sheath



🎯 SIMPLE TO INSTALL AND TO REMOVE FOR WINTER

The rescue ladder is installed around the stern rail by cow hitch.

Easy to install it also allows for quick removal for winter storage.



🎯 RELIABLE USE

The small line allows the ladder to be opened unaided from the water. The ladder unfolds automatically.



🎯 REBOARD EASILY

The length of the ladder is adapted for most boats on the market today.

The steps of the ladder have been specially designed to sink in the water.

In order to easily reboard, there should be 3 steps in the water. Reboarding is facilitated with wide steps to allow both feet on the steps at the same time and reasonable distance between the steps to make climbing easier.



🎯 FOR MORE SECURITY AND VISIBILITY:

- ▶ A new reflective tape (SOLAS Norm)
- ▶ The rope with reflective thread
- ▶ and directly attached to the ladder to create an adequate lifeline allowing to hang on and get closer to the ladder when the boat is moving.



BAB'So
- FIRST -

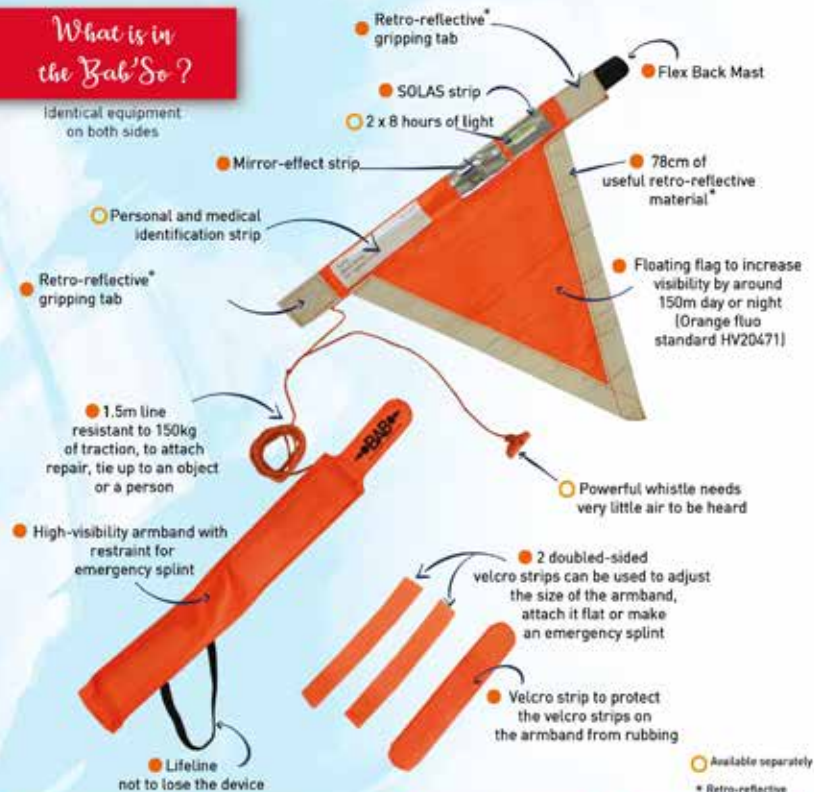
**SAFETY - SURVIVAL
PSYCHOLOGICAL SUPPORT**

My link with life!

Because every second saved is
a victory over the situation

What is in the Bab'So?

Identical equipment
on both sides



FLAG MY DISTRESS



SPOT THE OTHERS

BAB
BENEFICIAL-ALERT-BEACON®



HOLD ON



BE SEEN



BE HEARD



BE RECOGNIZED

**BAB'So FIRST new safety, survival and moral
support equipment unique in the world**

**LOST IN NATURE OR VICTIM OF AN ACCIDENT, WHAT DO
I NEED?**

**BAB'So FIRST meets the 4 ESSENTIAL NEEDS FOR A SAFE
RESCUE:**

- 1 - hold on: a reliable presence to keep your confidence and hope up - stay active while waiting for help - protect yourself from the heat or cold - stay safe with a 150 kg traction link - reassuring, completely autonomous, no need for subscription, batteries or phone network, reusable
- 2 - be seen by increasing your visibility day and night, on land or at sea
- 3 - be heard with a whistle suitable for short, rapid breath
- 4 - be recognized with medical and personal identification bands

This is the only equipment that acts as a catalyst to trigger your survival instincts by building up confidence and hope.

By allowing you to remain active in the event of an accident, BAB'So FIRST increases survivability, rescue speed and saves more lives.

What makes it unique ?

When an accident happens, the victim must be able to stay calm to be able to hold on, stay safe and signal their presence.

With no electronics and able to operate anywhere in the world, BAB'So FIRST is completely reliable.

It is suitable for everyone and for all natural environments.

BAB'So FIRST increases your ability to survive while awaiting rescue.

BAB'So FIRST is more than just technical assistance, it provides moral support making you an actor in your own rescue.



It's your lifeline



Sophie FREDEZ-BATAILLE
Balises Appel Bienveillance
Tel : +33 (0)6.81.10.14.17

contact@bab.bzh
www.bab.bzh

Manufacture and retail :
Tel.: +33 (0)2 98 94 63 03
contact@outils-oceans.com

Outils Océans
Concepteur & Fabricant Français



An accident: be an actor in your survival

**Within seconds of an accident, everything can change.
You enter a sort of bubble.**

Your brain has 3 areas that are always working together: the reptilian brain, the emotional brain and the rational brain.

The reptilian brain governs your safety and survival.

It has only three abilities: 1 - attack, 2 - flee, 3 - freeze. Therefore, it must be active to keep you alive.

Whatever your training, preparation or equipment, at the moment of the accident, a conflict will play out in your brain. Faced with stress, the emotional and rational parts of your brain will induce panic, doubt and despair, which block the reptilian brain. If the reptilian brain is paralyzed, your survival instinct won't kick in.

BAB'So is designed to act as a catalyst for your reptilian brain by providing it with a reliable presence, to maintain the confidence and hope it needs.

- BAB'So FIRST cannot fail: it needs no electronics, no network, no subscription, no batteries, and is made of ultra-resistant materials
- Versatile and instinctive, its use keeps you active.

When the reptilian part of the brain is confident, it triggers your survival instinct and reveals the superhero that is already in each of us, just like all those ordinary people who found extraordinary resources to get out of a hazardous situation.

Being a BAB'So carrier also means being able to reassure and assist anyone in distress.

Thanks to its design and unfailing reliability, BAB'So meets the 4 essential needs for a rapid rescue:



Because every second saved is a victory over the situation!



Sophie FREDEZ-BATAILLE Tel : +33 (0)6.81.10.14.17
Balises Appel Bienveillance

Manufacture and retail :
Tel.: +33 (0)2 98 94 63 03
contact@outils-oceans.com





Produit. Le kit Bab'so, pour sauver des vies en mer

Modèle le 14/03/2017 à 14:22 | Publié le 10/10/2017 à 13:31

QUEST FRANCE
Octobre 2017

En direct des quais. Sa conceptrice, Anne-Sophie Fridez-Bacille, est nommée aux Trophées « Les femmes de l'économie » du Grand ouest. Une belle reconnaissance.



Suzanne Gallon (french explorer—scientist) on an expedition to the North Pole with Felicity Aston (british explorer and climate expert) - 2018



Samantha Davis and Sophie During the Breizh Cup 2019



Rescue Week Paris - 2019



International Event of Trip and tourism of Colmar - 2019



Metstrade Amsterdam - 2017



Available in 3 models : PB244610 (Navy Blue/ White / Grey) - PB405510 (Navy Blue/ White / Grey) - PB405520 (Grey)

FENDERS

Developed over 10 years for offshore racing yachts, our flat fenders stay in place against the hull. They protect the paint and decorations on fragile hulls.



SOLID, LIGHT AND EASY TO STORE

Made from ultra-durable materials, designed to withstand forces: tearing, impact, punctures, sea water, oil, UV etc... It can even be used as a step or cushion.



QUALITY AT THE BEST PRICE

These new fenders are the result of our experience, our design methods, our taste for innovation and our commitment to serve you with products manufactured in France.



NEW: THE THICKER FENDER!

A greater thickness for larger units. The ideal fender for the layout along the hull which often requires to have different references of thicknesses.

(only available in grey)



References & Dimensions:

PB244610 = L 24 x H 46 x E 10 cm

PB405510 = L 40 x H 55 x E 10 cm

Colors : Navy blue, White & Grey

PB405520 = L 40 x H 55 x E 20 cm

Color : Grey

Materials :

- Fender in foam PE 30kg/m³, recovered:
- 1 face polyester coated PVC 2 sides 650g/m²,
- 1 back in polyester coated PVC 1 side
- 4 webbing attachment points,



Reference : PB1104010, RB, Ponton

PONTOON FENDER

This pontoon fender ensures you that your hull remains protected during storms, maneuvers and other situations of concern.



SOLID, LIGHT AND EASY TO STORE

Made from ultra-durable materials, designed to withstand forces: tearing, impact, punctures, sea water, oil, UV etc... It can even be used as a step or cushion.



ACCESSORIES *(not included)*

The oblong holes at the level of the rigid batten make it possible to adapt to all the pontoons. Be well informed with the manufacturer or the port to know the type of tools necessary for its good implementation.
(screws with hammer head, threaded plate, ...)

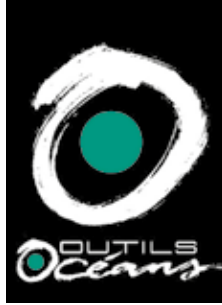


Reference & Dimensions:

PB1104010, RB, Ponton
L 110 x H 40 x E 10 cm
Color : grey

Materials :

- Fender in foam PE 30kg/m³, recovered:
- 1 face polyester coated PVC 2 sides 650g/m² (grey),
- 1 back in polyester coated PVC 1 side,
- rigid polypropylene batten in a polyester coated PVC 2 sides batten pocket



OPEN ROPE BAGS

Designed for storing flaked halyard and sheets.



Starting from the bitter end of the sheet or halyard, flake the line directly into the rope bag with both hands. The line will be ready.



EASY INSTALLATION AND REMOVAL

Quick and simple installation.

Remove when the boat is in port, for better protection against UV and weather. Facilitates cleaning and winterizing



MATERIAL AND DESIGN APPROVED

Solid products that have proven themselves in racing.

Developed in collaboration with racers.

References

T161906
T222508
T303110
T403110

Characteristics : Body in polyester coated PVC 2 sides, bottom in polyester coated PVC mesh, window in PVC crystal (ref T161906), reinforced with polyethylene 18/10, border in polypropylene webbing.

Color : White

OPEN ROPE BAGS

Designed for storing flaked halyard and sheets



Reference	T161906
Dimensions	L16 x H19 x W06 cm
Capacity	15 m of rope Ø6mm
Use	Place in the cockpit or inside the cabin, serves as pocket for arranging binoculars, gloves...



Reference	T222508
Dimensions	L22 x H25 x W08 cm
Capacity	35 m of rope Ø8mm
Use	Fix in the cockpit for arranging the halyards, reef lines, bottles...



Reference	T303110
Dimensions	L30 x H31 x W10 cm
Capacity	75 m of rope Ø8mm
Use	Place in the cockpit on either side of the pit for arranging the halyards.

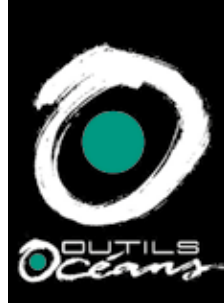


Reference	T403110
Dimensions	L40 x H31 x W10 cm
Capacity	100 m of rope Ø8mm
Use	Place in the cockpit on either side of the pit for arranging the halyards.

Your Reseller

Outils Océans

ZAC de Troyalac'h - 29170 Saint-Évarzec • Tél. : +33 (0)2 98 94 63 03 • Fax : +33 (0)2 98 94 68 22
 contact@outils-oceans.com • www.outils-oceans.com



CLOSED ROPE BAGS

Designed to store coiled lines.



Coil the rope, pull the front, and arrange the coil. The rope bag closes itself. Whatever sailing conditions, the contents will be there, ready.



EASY INSTALLATION AND REMOVAL

Quick and simple installation.

Remove when the boat is in port, for better protection against UV and weather. Facilitates cleaning and winterizing.



MATERIAL AND DESIGN APPROVED

Solid products that have proven themselves in racing.

Developed in collaboration with racers.

References

TS164020

TS252010

TS302515

TS304015

Characteristics : Body in polyester coated PVC mesh, sides in 2 sided polyester coated PVC, reinforced with polyethylene 18/10, border in polypropylene webbing, marine grade bungee.

Color : White

CLOSED ROPE BAGS

Designed to store coiled lines



Reference	TS164020
Dimensions	L16 x H40 x W20 cm
Capacity	60 m of rope Ø8mm
Use	Ideally placed at the mast base for storing halyards and reef lines.



Reference	TS252010
Dimensions	L25 x H20 x W10 cm
Capacity	25 m of rope Ø8mm
Use	Small, ideal for fixing on the bome.



Reference	TS302515
Dimensions	L30 x H25 x W15 cm
Capacity	50 m of rope Ø8mm
Use	For the cockpit.

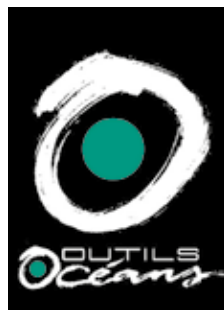


Reference	TS304015
Dimensions	L30 x H40 x W15 cm
Capacity	75 m of rope Ø8mm
Use	Large size, perfect for the cockpit or inside the cabin.

Your Reseller

Outils Océans

ZAC de Troyalac'h - 29170 Saint-Évarzec • Tél. : +33 (0)2 98 94 63 03 • Fax : +33 (0)2 98 94 68 22
contact@outils-oceans.com • www.outils-oceans.com



EQ5535,2C

EQ5534,2C x 2 pièces

STORAGE LOCKERS

These storage lockers with 1 or 2 pockets and their clear window are designed for easy installation and are modular.



MODULAR

Thanks to its rapid fixation system, the storage lockers can be fixed one to another either vertically or horizontally to create your own custom storage lockers.



ORGANIZED

Everything is organized and easy to find: one side for little things (suntan lotion, sunglasses, keys...), one side for larger objects (water bottle, A4 documents...)

Reference :
EQ5535,2C

Dimensions :
L55 x H34 x W08 cm

Large compartment : L 30 x H20 x W08 cm

Small compartment : L 16 x H20 x W08 cm

Color : White

Weight: 0,65 kg

Features : 2 pockets with window, Quick fixing, can be connected to another storage locker horizontally or vertically

Materials : back in 18/10 polyethylene (Black), PVC coated polyester pockets on 2 sides (white), crystal PVC windows, polypropylene webbing border.



PP332508

STORAGE LOCKER 1 COMPARTMENT WITH WINDOW

Everything is tidy and easy to find thanks to its large window



QUICK FIXING SYSTEM

Thanks to its quick fixing system, the window storage locker is easy to install



ORGANIZED

Large in size, it can be attached both indoors and outdoors to easily store and find all your items or documents.

Reference : PP332508

Dimensions : L33 x H25 x E 08 cm

Color : White

Weight : 0,32 kg

Features : pocket with window, Quick fixing, can be connected to another storage locker horizontally or vertically.

Materials : back in 18/10 polyethylene (Black), PVC coated polyester pockets on 2 sides (white), crystal PVC windows, polypropylene webbing border.



New product

Contact for more information



TM804010,3C,2RB

THE 3 COMPARTMENTS SOFT STORAGE LOCKER

Specially designed for multiple applications as sailboat, rigid inflatable boat, boat fishing cruiser trip or simply in a cove locker.



CONVENIENT

2 flap pockets on the upper part and in the lower part, another long pocket without gusset to store equipment of all types (rope, palm, boat hook, oar, fishing equipment...). An easily removable fixation system thanks to its plastic mushroom or by lashing using fixing loops. The soft storage locker will follow you wherever you go and with all your equipment, ready to use.



MODULAR

Line them up and adjust your storage. Once connected, the semi-open bottom pockets will allow you to store over-sized long equipment.

Reference: TM804010,3C, 2RB

Dimensions: L80 x H40 X ep10cm

Dimension of the 2 closed pockets: L35xH15xep10cm

Dimensions of the long pocket: L74xH15xep10cm

Weight : 1.30 kg

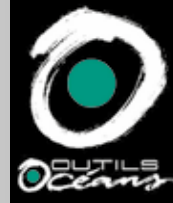
Colors: Black

Arrangements: body reinforced by straps with fixing loops, 2 pockets with external cartridge belt, adjustable flap and clasp, 1 long pocket with opening by adjustable bungee cord (and / or removable if modulated) in the lower part - The upper part of the pockets is provided rods to give more rigidity and ease of opening, possibility of coupling several storage lockers with junction of the bottom pockets, if necessary.

Materials: body and pockets in 2-sided PVC coated polyester, bottom of the pockets in double sided PVC coated polyester mesh, polypropylene webbing reinforcements (BLACK), adjustable plastic clasp buckle.

STORAGE SOFT LOCKER

3 COMPARTMENTS, MODULAR



Organized storage, protected material



1 The 2 pockets with flap on top come with an adjustable clasp. Your belonging is then protected from ocean spray.

2 Mesh fabric for the bottom of the pockets prevents water stagnation.

3 A 2 elements cartridge belt on the inside face pocket for storing clamp, knives and various tools if needed.

4 The long bottom pocket without bellow is just made to store quickly and easily long objects.

5 At each end you will find (removable if necessary) a bungee cord with a pickup and a strap with adjustable middle clasp to compress everything.



Handy fastening systems

Loops allow you to attach either by lashing using padeye or trigger guard (no provided)

6 Either as a sheath by passing your lifelines, inflatable lifeline or the two of them. These loops are arranged all around in periphery of the locker, 5 at the top, 3 at the bottom and one in the middle of the sides.

7 For flat or even curved surfaces, the quick fastening system by plastic mushroom will also allow you to set up quickly.

Fit your boat, your needs

Whether on a sailboat, a rigid inflatable boat, a boat fishing cruiser trip or simply in a cove locker, this soft storage locker will follow you everywhere.



Outils Océans

ZAC de Troyalac'h • 10 rue Nicolas APPERT • 29170 Saint-Evarzec • Tel.: +33 (0)2 98 94 63 03 Fax: +33 (0)2 98 94 68 22 • contact@outils-oceans.com • www.outils-oceans.com



LEE CLOTH

The lee cloth Outils Océans was designed to fit different sized bunks with 3 attachment loops on top on each side.



It is held down by two attachment loops and has a reinforced bottom that folds under the bunk and fixed by screws.



The material has openings for air flow and reinforcements ensure great strength and durability.

Reference : TM17073

Dimensions : L170 x H73 cm

Characteristics :

- Reinforced around the perimeter and 2 vertical reinforcements
- Loops for adjusting the length to 170 /145 / 120 cm
- Loops for attaching the base
- Flap to be placed under the bunk and fastened with screws (not supplied)

Material:

- PVC coated polyester mesh (White),
- Flap PVC coated polyester 2 sides (White), 8cm
- Reinforcements polypropylene webbing (Black)



RMW2

RMWRARH

WINCH HANDLE HOLDERS: UNIVERSAL WINCH HANDLE HOLDER AND PAIR OF CLOCK WISE AND COUNTER CLOCK WISE WINCH HANDLE HOLDERS

The inclined cut and notch in the upper part of the holder allows the winch handle to be stowed against the cockpit.



ERGONOMIC AND EFFICIENT

These winch handle holders are used on large racing yachts to store and facilitate the use of the winch handles.



EASY INSTALLATION AND REMOVAL

Quick and simple installation. Remove when the boat is in port, for better protection against UV and weather. Facilitates cleaning and winterizing.

Reference : RMW2 et RMWRARH

Dimensions : L10 x H35 x E07 cm

Color : white

Weight: 0.15 kg

Characteristics : Body in 2 sided PVC coated polyester, back in polyethylene

18/10, opening reinforced with Eva foam, border in polypropylene webbing.

WINCH HANDLE HOLDERS: UNIVERSAL WINCH HANDLE HOLDER AND PAIR OF CLOCK WISE AND COUNTER CLOCK WISE WINCH HANDLE HOLDERS

How to choose ?



🕒 Location onboard relative to an object: Pair of clock wise and counter clock wise winch handle holders :

If there is an object (rope bag, bulkhead, door ...) next to the winch handle holder. Choose the RMWRHRA which can store the winch handle in the opposite direction of the object.

🕒 Location on the boat relative to the winch: Pair of clock wise and counter clock wise winch handle holders

If there is no object near the winch handle holder, the choice is made with respect to the location of the winch.

Choose the RMWRA if the winch handle is stored to the right of the winch.

Choose the RMWRH if the winch handle is stored to the left of the winch.

Pair of clock wise and counter clock wise winch handle holders (RMWRARH): allow the winch handle to be stored always in the same direction.

🕒 The Universal Winch Handle Holder (RMW2) allows the winch handle to be stored neatly in all cases.

Your Reseller

Outils Océans

ZAC de Troyalac'h • 10 rue Nicolas APPERT • 29170 Saint-Evarzec • Tél. : +33 (0)2 98 94 63 03 Fax : +33 (0)2 98 94 68 22 • contact@outils-oceans.com • www.outils-oceans.com



RMB

WATER BOTTLE HOLDER

Designed in collaboration with professional offshore sailors.
Placed close to the helm or in the cockpit, you always have your bottle at hand.



PRACTICAL DESIGN

The bottle holder is adjusted to the form of a bottle
and holds the bottle regardless of the heel of the boat.



LIGHT AND DURABLE

The materials have been selected for their resistance to
humidity, salt water and UVs.

Your Reseller

Reference : RMB
Color : White
Dimensions : L10 x H25 x W10 cm

Materials : corps en tissu polyester enduit PVC,
dos en polypropylène, bordures nylon,
ouverture en mousse EVA



HP1003



GUARD LINE PROTECTIONS

Guard line protection received specific arrangements to increase its lifespan and its ability to secure :

- Inner spiral tube to protect from potential cuts,
- High density foam,
- Closing with lacing system on both sides.

Reference : HP1003

Dimensions : L100 x D3,5 cm

Color : White

Weight: 0,25 kg

Features : Foam tube, closure by velcro, Closing with lacing system on both sides, Inner spiral tube to protect from potential cuts.

Materials : Body in high resistance polyester coated PVC 2 sides (WHITE), , polyethylene foam tube, spirale tube en PVC, border in polypropylene webbing.



RHP1140

MOORING LINE PROTECTION

For a good protection against chafing, an EVA foam lining is sewn inside the PVC coated polyester on both sides.

It also allows, when carefully wrapped up and tightened up with velcro strips all along, to stay in position.

Reference : RHP1140

Dimensions : L11,5 x H 40 cm

Colour : White

Weight : 0,25 kg

Features : Velcro closure, interior lined with foam.

Materials : Body in high resistance polyester coated PVC 2 sides (WHITE), Foam EVA Ep. 2 mm, border in polypropylene webbing.



HP1745

TURNBUCKLE PROTECTIONS

In addition to aesthetic aspect brought, your turnbuckle will be protected from the salty winds of sea and your sheet from your piston pin.

It sets up with a strap that you set under the chainplate and a velcro strap all along the protection.

Reference :HP1745

Dimensions : L17 x H45 cm

Color : White

Weight : 0,25 kg

Features : Closure by Velcro

Materials : Body in high resistance polyester coated PVC 2 sides (WHITE) Fixing system and border in polypropylene webbing.



NEW

Evolution of the Racing range.
Body in polyester coated PVC mesh
(peforated grey)



RACING OPEN ROPE BAGS

Racing by Outils Oceans has been created to answer the call for lightweight sturdy rope bags and accessories.
With a new design and material, our Racing rope bags are on average 20% lighter.
They retain their shape and don't deform.
Solid and durable, they have been tested on the new Ultime trimarans and IMOCA Open 60s.



EASY INSTALLATION AND REMOVAL

Quick and simple installation.
Remove when the boat is in port, for better protection against UV and weather. Facilitates cleaning and winterizing



MATERIAL AND DESIGN APPROVED

Solid products that have proven themselves in racing.
Developed in collaboration with racers.



END OF LINE

Some open rope bags are still available.

References

T161906,racing
T222508,racing
T303110,racing
T403110,racing

Materials : body in perforated pre-stressed polyester coated PVC (GREY), opening and slats in 18/10 polyethylene, edging in polypropylene webbing (DARK GREY).

Color : Grey

OPEN ROPE BAGS

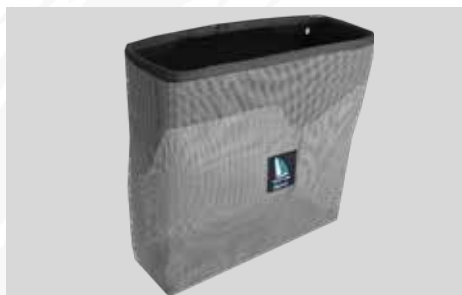
Designed for storing flaked halyard and sheets



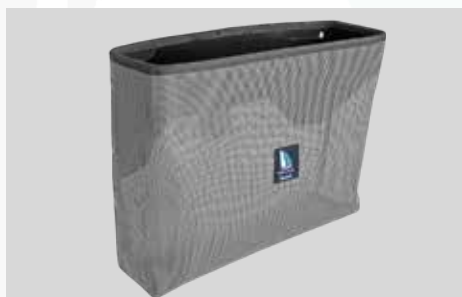
Reference	T161906,Racing
Dimensions	L16 x H19 x W06 cm
Capacity	15 m of rope Ø6mm
Use	Place in the cockpit or inside the cabin, serves as pocket for arranging binoculars, gloves...



Reference	T222508,Racing
Dimensions	L22 x H25 x W08 cm
Capacity	35 m of rope Ø8mm
Use	Fix in the cockpit for arranging the halyards, reef lines, bottles...



Reference	T303110,Racing
Dimensions	L30 x H31 x W10 cm
Capacity	75 m of rope Ø8mm
Use	Place in the cockpit on either side of the pit for arranging the halyards.



Reference	T403110,Racing
Dimensions	L40 x H31 x W10 cm
Capacity	100 m of rope Ø8mm
Use	Place in the cockpit on either side of the pit for arranging the halyards.



RMWRARH,Racing

WINCH HANDLE HOLDERS: PAIR OF CLOCK WISE AND COUNTER CLOCK WISE WINCH HANDLE HOLDERS

The inclined cut and notch in the upper part of the holder allows the winch handle to be stowed against the cockpit.



ERGONOMIC AND EFFICIENT

These winch handle holders are used on large racing yachts to store and facilitate the use of the winch handles.

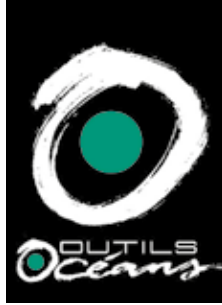


EASY INSTALLATION AND REMOVAL

Quick and simple installation. Remove when the boat is in port, for better protection against UV and weather. Facilitates cleaning and winterizing.

Reference : RMWRARH
Dimensions : L10 x H35 x E07 cm
Color : Grey
Weight: 0.15 kg

Materials : back in polyethylene 18/10 (BACK), body in perforated polyester coated PVC (grey pre-stressed), edging in polypropylene webbing (DARK GREY)



RMB,Racing

WATER BOTTLE HOLDER

Designed in collaboration with professional offshore sailors.
Placed close to the helm or in the cockpit, you always have your bottle at hand.



PRACTICAL DESIGN

The bottle holder is adjusted to the form of a bottle
and holds the bottle regardless of the heel of the boat.



LIGHT AND DURABLE

The materials have been selected for their resistance to
humidity, salt water and UVs.

Reference : RMB,Racing
Color : blanc
Dimensions : L10 x H25 x E10 cm

Materials : back in polyethylene 18/10 (BACK), body in perforated polyester coated PVC (grey pre-stressed), edging in polypropylene webbing (DARK GREY)



ZULUPACK BAGS WATERPROOF AND RESISTANT BAGS



From left to right: Tube 45, Nomad 25, Nomad 35, Nomad 60

Proven resistance



Being made with high frequency welding, the Zulupack bags are guaranteed to be waterproof, sandproof and mudproof. PVC coated nylon 420D is used to ensure the bags can resist being ripped, damaged by friction and even resist the cold (until -15°C / 5°F).

Practical et comfortable



Zulupack bags are designed to make its owner's life easier. The numerous outer pockets and the multiple inner storage space allow you to keep all your belongings with you.

Like every work tool, you should never be reluctant to use your bag. The thermoformed back and straps ensure optimal comfort. The straps are covered in lycra to avoid them being wet from water absorption.



Adapted closing system



The winding closing system makes so that your bag is completely waterproof. If the upper part of the bag is wrapped 3 to 4 times, your bag can safely be put in contact with water, sand, mud... And its content will be protected.



THE MATOS

Stacking bags exclusively designed by Outils Oceans in collaboration with the greatest skippers.



BEST OF A BOX AND A BAG

Solid and structured to carry heavy equipment without deforming (anchor, tools, hardware, jerry cans ...). Lightweight and foldable to compress the unused volume and save space.



NO LOAD LIMITS

The design and materials used allows the gear to be loaded until we can no longer carry it. The limit is that of the user.

References	Matos60	Matos70
Dimensions	L60 x H28 x E28 cm	L70 x H32 x E32 cm
Weight Empty	1,35 kg	1,75 kg
Capacity	47 L	72 L
Color	red, navy	

Characteristics : one large compartment which opens completely with 2 flaps, zip closure, handles at each end, 2 multi-use cords: carrying, compression of the bag, 1 list holder

Materials : rigid body unbreakable polyethylene, body and sides 2 sided PVC coated polyester, velcro flaps, injected nylon zipper, strap and, polypropylene border, crystal PVC carrier list.

Option : 2 removable division pockets.

THE MATOS

BEST OF A BOX AND A BAG



Division pockets (optional)

2 removable pockets are available to compartmentalize The Matos and organize your gear.

Flaps

2 flaps for direct access to the content when the bag is in a small space (bunk, ...). Opens and closes with one hand.

List Holder

Listing the contents directly on the bag is the best way to find your gear.

THE LINES THAT DO ALL : SAILORS, TIE YOUR KNOTS!

Space saving

When empty, the bag folds completely.



When the bag is loaded :It can be tightened to maintain the contents compact. The gear stays in place in the bag.

When the bag is full you can stack another bag on top.

Carry Straps : you choose how to carry your Matos :

with the handles at the extremities



with handles on the sides



with the handles over the top



Compartmentalize your matos with inside pockets.

Ref :

Matos 60 : **PO282428** - L28 x H24 x E28 cm

Matos 70 : **PO382832** - L38 x H28 x E32 cm

Outils Océans

ZAC de Troyalac'h • 10 rue Nicolas APPERT • 29170 Saint-Evarzec • Tél. : +33 (0)2 98 94 63 03
 Fax : +33 (0)2 98 94 68 22 • contact@outils-oceans.com • www.outils-oceans.com



CO452425

MOORING BAG

The CO452425 is a bag with flap offering a large storage volume without compartment inside.

This bag is used to store and protect the material to be stored. It is used on boats as a stuffing bag, to store and protect mooring line, or to store any type of technical equipment requiring protection. It's a light and waterproof bag.



SOLID

Unbreakable design, designed to withstand all equipment loads. Materials that can withstand shocks, acids and moisture.

Reference : CO452425

Dimensions : L45 x H24 x E25 cm

Color : Red

Features: 1 large compartment, Opening by flap with fasteners, 2 carrying handles, 1 reflective strip, 1 shoulder carrying strap, 2 holes in bottom for draining water.

Materials : Semi rigid polyethylene body 18/10eme (Black), Polyester gusset and flap, PVC-coated on both sides (Red), Polypropylène strap and edging, reflective tape.



CO1 navy blue

CO1 red

Tool bag for minor jobs

Designed for all professionals on minor on-site maintenance jobs.



Easy to handle

Very compact and lightweight for quickly carrying a few tools to the place of work



Ultra-strong

Manufactured using unbreakable materials, that are shock-, hydrocarbon-, acid- and moisture-resistant and durable.

Reference: CO1

Colours: navy blue and red

Dimensions: L38 x H15 x D15 cm

Empty weight: 450 g

Max. load: 15 kg

Features • 1 closed by a soft flap and 2 fasteners • 1 large compartment for storing tools • 1 central carrying handle • 2 side carrying handles • 1 shoulder carrying strap.

Materials • semi-rigid polyethylene body • polyester gusset and flap, PVC-coated on both sides • polypropylene strap and edging • brass rivets • injected polyamide fasteners.

TOOL BAG FOR MINOR JOBS



Light as a bag, solid as a box

Highly modular load-carrying capacity



Thanks to its soft sides and flap, and to its adjustable closing straps, the CO1 bag is able to absorb all tool loads and overloading.

Load it up, then load it some more.

Fully opening

Take a quick glance and select the tool you need.



The whole flap opens to provide direct access to the storage compartment.

Easy to carry



The central handle is positioned on the flap allowing you to quickly grab your CO1 bag after closing it.



The shoulder strap allows you to carry your CO1 bag over your shoulder and keep your hands free.

Your distributor

New



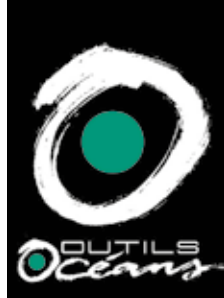
New ergonomic handle

Reflective strip to increase visibility and keep technicians safe



Outils Océans

ZAC de Troyalac'h • 10 rue Nicolas APPERT • 29170 Saint-Evarzec • Tel.: +33 (0)2 98 94 63 03 Fax: +33 (0)2 98 94 68 22 • contact@outils-oceans.com • www.outils-oceans.com



CO10 navy blue

CO10 red

Tool bag for minor jobs

Designed for plumbers called out for emergency repairs.



Easy to handle

Practical design, ideal for carrying a few tools under all conditions



Ultra-strong

Materials that can be deformed as required, capable of withstanding all stresses and strains: shocks, acids, hydrocarbons, moisture.

Reference: CO10

Colours: navy blue and red

Dimensions: L45 x H15 x D15 cm

Empty weight: 630 g

Max. load: 15 kg

Features • 1 closure by a soft flap and 2 fasteners • Rigid sides • 1 compartment for storing tools • 1 central carrying handle • 2 side carrying handles • 1 shoulder carrying strap.

Materials • semi-rigid polyethylene body • polyester gusset and flap, PVC-coated on both sides • polypropylene strap and edging • brass rivets • injected polyamide fasteners.

TOOL BAG

FOR MINOR JOBS



Light as a bag, solid as a box

Optimized loading



The sides of the CO10 bag are high: they stop any tools from escaping when you close it. Reinforced, they allow long, pointed tools to be stored.

The flap is soft and the fasteners are fitted with adjustable straps. The CO10 bag can withstand tool overloading.



Load it up, adjust the straps and close it.

Fully opening



The soft flap opens right back to give you a panoramic view of the inside of the bag. You have direct access to the tools stored inside.

Open, choose and set to work.

Easy to carry



The central handle is positioned on the flap allowing you to quickly grab your CO10 bag after closing it.

The shoulder strap allows you to carry your CO10 bag over your shoulder and keep your hands free.



Your distributor

New



New ergonomic handle

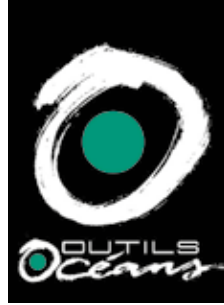
Reflective strip to increase visibility and keep technicians safe



FP 0810-07

Outils Océans

ZAC de Troyalac'h • 10 rue Nicolas APPERT • 29170 Saint-Evarzec • Tel.: +33 (0)2 98 94 63 03 Fax: +33 (0)2 98 94 68 22 • contact@outils-oceans.com • www.outils-oceans.com



CO2 navy blue

CO2 red

Tool bag for mobile maintenance

Designed like a tool box, for carrying a wide selection of tools for all types of job.



Easy

Simple fittings for organizing the storage of, and rapid access to tools



Solid

Unbreakable design, designed to withstand all equipment loads. Materials that can withstand shocks, acids and moisture.

Reference: CO2

Colours: navy blue and red

Dimensions: L45 x H24 x D26 cm

Empty weight: 1100 g

Max. load: 15 kg

Features • opening by flap with fasteners • 1 large compartment • 1 central partition with 1 cartridge belt at the front 2 pockets at the back • 1 shoulder carrying strap • 2 carrying handles.

Materials • semi-rigid polyethylene body • polyester gusset and flap, PVC-coated on both sides • polypropylene strap and edging • brass rivets • injected polyamide fasteners.



TOOL BAG

FOR MOBILE MAINTENANCE



NEW

Light as a bag, solid as a box

Large carrying capacity



The flap opens right back to give you a panoramic view of the inside of the bag. Load it up with all your tools: hand tools, measuring instruments, electrical and portable equipment etc.



The sides and flap are soft and the fasteners are fitted with adjustable straps. The CO2 bag easily absorbs overloading with tools.

Load it up, adjust the straps and close it.



Reflective strip to increase visibility and keep technicians safe

Tailored to your storage needs



The partition divides the compartment into two so that you can organize the storage of your tools. In front of the partition: a cartridge belt for storing your larger hand tools

Behind the partition: two flat pockets designed to hold small tools



Cleverly-designed for carrying



Open and loaded, the CO2 bag swings back to 45° when you pick it up by one of its side handles. The soft sides prevent tools from escaping. Very practical for moving your bag in the middle of a job.

With its shoulder strap, carry your bag over your shoulder to keep your hands free.



Your distributor

The tool bag CO2 is admitted in ATEX areas according to EN13463-1 standard

- ▶ Area 0, 1, 2 for gas group IIA according to the directive 1999/92/CE
- ▶ Area 20, 21, 22 for dust according to the directive 1999/92/CE



Compliance Testing
by INERIS



CO3 navy blue

CO3 red

Tool bag for mobile maintenance

Designed for professionals for minor jobs on electrical networks.



Easy to handle

Very compact and light for carrying small tools on the job under all conditions.



Organized

A real tool satchel: a wide variety of fittings to simplify the storing of all your equipment

References: **CO3**

Colours: navy blue and red

Dimensions: L35 x H20 x D10 cm

Empty weight: 750 g

Max. load: 15 kg

Features • closed by a flap with a Velcro strip • 1 central compartment with 1 cartridge belt and 1 pocket • 1 one gusseted pocket under the flap • 2 external side pockets with flaps closed by Velcro • 1 shoulder carrying strap • 1 central carrying handle • *Option: Velcro strip for carrying on a belt.*

Materials • semi-rigid polyethylene body • polyester gussets and flap, PVC-coated on both sides • polypropylene strap and edging • injected polyamide fastener

TOOL BAG

FOR MOBILE MAINTENANCE



Light as a bag, solid as a box

Quickly-accessible tools



With its Velcro strip, the flap can be quickly opened and closed. Under the flap, you can store small tools in a gusseted front pocket.

On each side, a pocket closed by a Velcro strip allows you to isolate a torch or a tube of grease.



Small, organized volume

The flap opens fully. You have immediate access to the central compartment and internal stowages.



At the front of the compartment, a flat pocket has been designed for small documents. Slip your job sheets or PDA into it.

Integrated into the compartment, the cartridge holder: 6 cavities of different sizes for each of your hand tools.

Practical to carry



The central handle: for grabbing your C03 bag quickly when closed.

The cartridge belt: for carrying the bag over your shoulder and keeping your hands free.



As an option, add a Velcro system: practical for working at height, the strap-cartridge belt transforms into a belt.



Your distributor

New



New ergonomic handle

Reflective strip to increase visibility and keep technicians safe





CO5 navy blue

CO5 red

Large tool stowage bag for repair work

Designed for all mobile work teams.



Organized

Like a tool box: offers a wide range of fittings
Small and large tools and documents - everything has its place.



Easy to handle

Better than a tool box: light, very strong materials.
Very easy to carry and can be stored anywhere.

Reference: CO5

Colours: navy blue and red

Dimensions: L45 x H28 x D26 cm

Empty weight: 2 kg

Max. load: 25 kg

Features • opened by soft top flap and rigid front with fasteners • 1 net pocket for documents and gloves under the flap • 1 large bin for big tools • 1 central partition removable by clips with cartridge belt • 1 tool stowage panel, removable by clips, with cartridge belt • 1 carrying handle • 1 cartridge belt strap /belt.

Materials • semi-rigid polyethylene body • polyester gusset and flap, PVC-coated on both sides • polypropylene strap and edging • brass rivet and clips • injected polyamide fasteners.

LARGE TOOL STOWAGE BAG FOR REPAIR WORK



Light as a bag, solid as a box

Practical access to tools



The flap opens fully for quick access to all stowages. Open and instantly see the tool that you need

Two fasteners allow you to fully fold down the front of the CO5 for easy access to the front stowages.



Cleverly-designed fittings



The inside of the flap has been designed with a net pocket in which to isolate your documents and gloves from the rest of the tools.

The strap is detachable and can be used as a belt to which equipment can be hooked.



The partition and front of the compartment are fitted with cartridge belts for storing your hand tools. The partition can be removed by a simple clipping system: remove it so that bulky equipment can be placed in the bag.



Easy to carry



The central handle is positioned on the flap allowing you to quickly grab your CO5 bag after closing it.

With its cartridge belt, carry your bag over your shoulder: you have both hands free.



Your distributor

New



New ergonomic handle

Reflective strip to increase visibility and keep technicians safe





CO6 navy blue

CO6 red

Tool bag for mobile maintenance

Designed for electricians who have to travel with a large selection of tools.



Modular

Like a tool box: offers a wide range of fittings for organizing the efficient stowage of tools.



Easy to handle

Better than a tool box: light, very strong materials. Very easy to carry and can be stored anywhere.

Reference: CO6

Colours: navy blue and red

Dimensions: L45 x H28 x D17 cm

Empty weight: 1.8 kg

Max. load: 25 kg

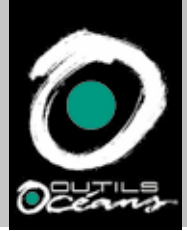
Features • opened by soft top flap and rigid front with fasteners • 1 net pocket for documents and gloves under the flap • 1 bin for semi-organized stowage • 2 side pockets • 1 central partition detachable by clips with cartridge belt • 1 tool stowage tray detachable by clips • 1 cartridge belt shoulder carrying strap • 1 central carrying handle.

Materials • semi-rigid polyethylene body • polyester gusset and flap, PVC-coated on both sides • polypropylene strap and edging • brass rivets and clips • injected polyamide fasteners.



TOOL BAG

FOR MOBILE MAINTENANCE



Light as a bag, solid as a box

Practical access to tools



The flap opens fully for quick access to all stowages. Open and instantly see the tool that you need



Fully fold down the front for easy access to the front stowages.



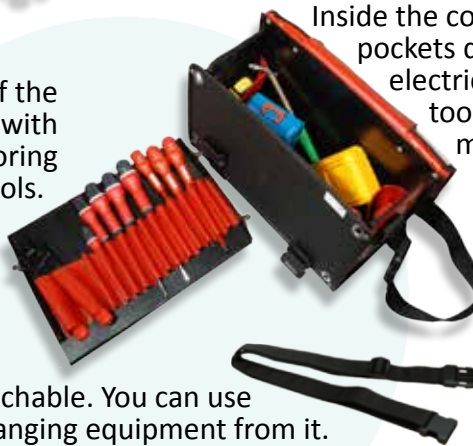
NEW

Reflective strip to increase visibility and keep technicians safe

Cleverly-designed fittings

The partition and front of the compartment are fitted with cartridge belts for storing your hand tools.

The partition is detachable: remove it for even more room.



Inside the compartment-bin: 2 side pockets designed to hold small electrical devices or hand tools, and a pocket for miscellaneous items.

The inside of the flap has been designed with a net pocket in which to isolate your documents and gloves from the rest of your tools.



The strap is detachable. You can use it as a belt for hanging equipment from it.

Easy to carry



The central handle is positioned on the flap allowing you to quickly grab your CO6 bag after closing it.



With its cartridge belt, carry your bag over your shoulder and keep both hands free.

Your distributor

The tool bag CO6 is admitted in ATEX areas according to EN13463-1 standard

- ▶ Area 0, 1, 2 for gas group IIA according to the directive 1999/92/CE
- ▶ Area 20, 21, 22 for dust according to the directive 1999/92/CE



Compliance Testing
by INERIS



COT301606 Navy blue

COT211105 Navy blue

Tool kit belts

Designed for electricians and technicians who have to work standing up and have tools to hand rather than in pockets.



Compact

Reduced volume and featherweight for carrying just what you need; easily stowed in a large work bag.



Sturdy

Made from durable materials that can withstand pointed tools, shocks, abrasion and moisture.

Reference: COT301606

Colours: navy blue
Dimensions: L30 x H16 x D06 cm
Empty weight : 310 g
Max. load: 4 kg

Reference: COT211105

Colours: navy blue
Dimensions: L21 x H11 x D05 cm
Empty weight : 230 g
Max. load: 2 kg

Features • 1 zip fastener

• 1 rigid tool carrying panel for both references • 1 cartridge belt bungee cord for the COT301606. • 1 belt strap/shoulder strap with fastener: fixed on the COT301606 and detachable on the COT211105.

Materials • polyester body, PVC coated on both sides • rigid polyethylene panel • nylon zip fastener • polypropylene strap and edging • injected polyamide fastener.

Light as a bag, solid as a box

Practical access to tools

The materials are very strong and allow the kit to be opened to 90° for easier tool selection.



On the front: a rigid panel. Remove a few tools to be used or those that you no longer need to look for others easily at the bottom of the bag.

Open and select.

Safe arrangement

COT tool kits are carried round the waist. You no longer have to bend down to pick up your equipment by your feet, it's within reach, not in your pockets, in its dedicated stowage.



Its capacity allows you to carry a selection of tools or special PPE for a given mission. Only carry what you need.

Adaptable carrying options

The belt is adjustable. It can be extended for those who prefer to carry it on the shoulder. It is fixed in the case of COT301606 and detachable on COT211105



Carried on the belt: ideal for working standing. Buckle up the strap, slide the kit to the desired position: in front of you, behind you, on the right or left. Your hands are free for working.

Your distributor



TOOL BACK-PACK

An "à la carte" bag suitable for all trades.
Each professional organizes the stowing of his tools to meet his needs.



ROOMY & COMPACT

Sufficient volume to carry everything you need: tools, PPE, documents.
Optimized for stowing and quickly finding all your equipment.



STRONG

Able to withstand shocks, hydrocarbons and moisture.
Materials and assembly components chosen for intensive use.

Reference: SD324516,1C

Reference with integrated trolley:
SD324516,1C,RL

Colours: navy blue

Dimensions: L32 x H45 x D16 cm

Empty weight : 1.65 or 3.15Kg (trolley)

Max. load: 20 kg

Features • 1 central compartment with flap and zip fastener • 1 net pocket on the base • 1 hinged partition with patch pocket and cartridge belt on both sides (9 cavities + 5 cavities) • 1 flat pocket on the flap • 1 name holder on the top • padded back • 1 handle • 2 adjustable shoulder straps with foam backing.

Materials • semi-rigid polyethylene body, frame and partitions • polyester gusset and flap, PVC coated on both sides • polyurethane and polyethylene foams • polypropylene strap and edging • 8 mm nylon zip fastener • polypropylene pocket reinforcement • nickel brass eyelets • stainless steel fasteners.

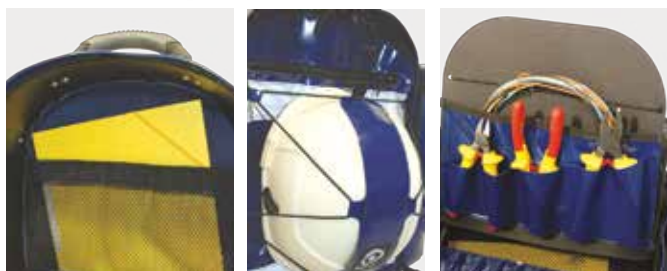
Optional modules • Hinged partitions with cartridge belt on both sides • external tubular type side pocket, open at the top • External tubular type side pocket, with zip fastener at the top • External side pocket with wide opening and zip fastener.

1 ERGONOMICS



Foam reinforcement and backing, the bottom of the bag protects the user's back from pointed tools. Foam also pads the adjustable shoulder straps for improved comfort. When not carried on the back, the bag can be grabbed quickly by its handle.

2 ORGANIZATION



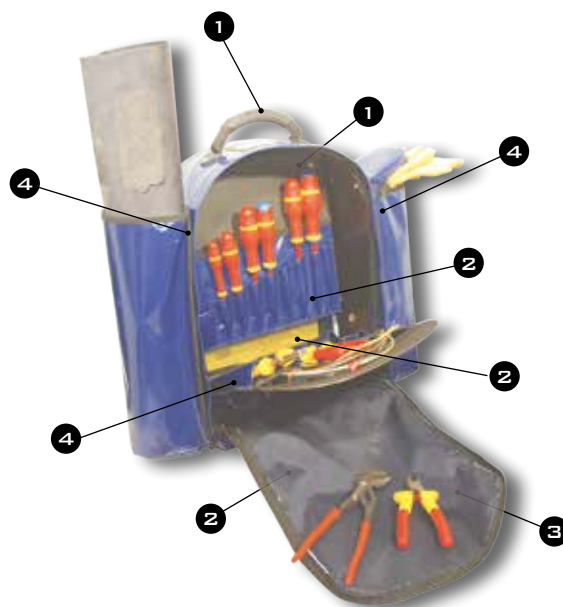
Documents, PPE, tools etc. The bag is designed to carry everything you need with ease. Every item has its place in one of the storages: plans and job sheets in the pocket at the bottom, safety helmet on the front, gloves in the tubular pocket, screwdrivers in the cartridge belts etc.

4 MODULARITY



There are 28 possible configurations. Inside the bag, install up to 3 hinged partitions for stowing your tools. On each side, fix one of 3 models of pocket: tubular type pocket, pocket with wide opening or closed tubular type pocket.

New model!
With integrated trolley:

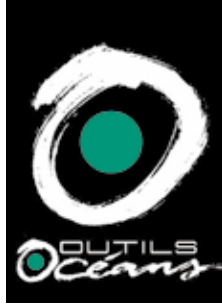


3 SECURITY



With his bag carried on his back, the operator keeps his hands free. Thanks to the reflective strips on the front, he remains visible whatever the circumstances.

Your distributor



SD294515,PG, 6C.

Technical / office backpack

For carrying documents, folders, a PC or tablet with charger, mouse and a few tools.



Multi-compartment

Numerous pockets to organize and store all your equipment.



Compact

Ideal for use on public transport or as carry-on luggage.
Its size allows access on caged ladders.

Reference: SD294515,PG, 6C

Colour: black

Dimensions: L29 x H45 x D15 cm

Empty weight: 1.25kg

Features ● 6 compartments ● Foam-lined back with 3D mesh ● 2 adjustable shoulder straps, foam reinforcement, shoulder carrying + handle between the straps ● Gusset for attachment on trolley handle (suitcase or trolley tool bag) and for strap storage when carried as a case ● 1 carrying handle, Horizontal "case" carrying ● Front fitted with 3 horizontal straps with reflective webbing ● 2 Side straps with clasp for tightening.

Materials ● 600D Polyester body (Black) ● Bottom and lower sides in 2-sided PVC-coated polyester (Black), ● Polyamide 210 D PU coated inner lining ● Polyester straps ● Waterproof 10mm inverted nylon spiral zippers ● Zipper pull with retro-reflective cord.

BACKPACK

TECHNICAL / OFFICE



Practical features



- 1** large front gusset pocket, 3-way zippered opening with waterproof zip. Compartmentalized inner pouch with removable semi-rigid partition for tools (tape measure, screwdriver, pliers, cutter, pencils, etc.).
- 2** 1 flat side pocket, straight waterproof zipper, accessible from the side and positioned behind the large flap pocket.
- 3** 1 Rear compartment with side access via waterproof zipper for tablet/PC, mouse and charger. 3-sided foam compartment + 2 removable protective foam pads.
- 4** 1 small top pocket accessible from outside by waterproof zipper and foam lined.
- 5** 1 large central compartment, waterproof zip, padlockable (padlock not supplied), for documents, files... Inner compartment with a large flat pocket and a zippered mesh pocket.
- 6** 1 small gusset pocket on the front, 2-sided opening with waterproof zipper, for small PPE: glasses, gloves, earplugs, etc.

Choice of carry



Outils Océans

ZAC de Troyalac'h • 10 rue Nicolas APPERT • 29170 Saint-Evarzec • Tel.: +33 (0)2 98 94 63 03 Fax: +33 (0)2 98 94 68 22 • contact@outils-oceans.com • www.outils-oceans.com



CO2N,BF / CO453626,RL

Light, mobile tool organizer

All the advantages of a tool organizer
with the added benefit of 5kg empty weight



Easy

Simple arrangement to organize
storage and access tools quickly.



Robust

Unbreakable, designed to withstand any equipment load.
Materials to withstand shocks, acid, humidity.

Reference: CO2N,BF

Dimensions: L45 x H24 x E26 cm

Empty weight: 1.3 kg

Features ● 1 soft flap closure with 2 adjustable buckles, ● 1 retro-reflective stripes on the flap, ● 2 tool storage compartments, ● 1 central divider with 10 tool loops at the front and elastic at the rear, ● 1 large flat pocket on the bottom, ● 2 side slots for measuring devices, ● 2 side carrying handles, ● 1 shoulder strap, ● 1 strap with buckle on the back for fixing to the tool organizer trolley CO453626,RL.

Materials ● semi-rigide polyethylene body ● gussets, partition and flap in double-sided PVC-coated polyester ● polypropylene strap and edges ● brass rivets ● injected polyamide buckles.

Reference: CO453626,RL

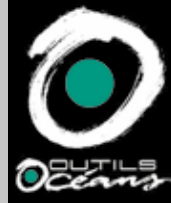
Dimensions: L45 x H36 x E26 cm

Empty weight: 3.7kg

Features ● flap and buckle closure, ● 1 large compartment for power tools or bulky items with 2 large side pockets for measuring instruments, ● 1 central rigid divider with 9 tool loops on the front and elastic on the back, ● Front panel opening with 2 buckles giving access to 1 tool tray with 13 loops, ● integrated mechanical castors, ● telescopic pull handle, ● the handle can hold a 2nd CO2 bag held by a strap and buckle and resting on the main bag.

Materials ● Body and divider in 18/10th polyethylene (BLACK), ● flap and gussets in 2-sided PVC coated polyester (BLACK), ● polypropylene straps and edging, ● injected polyamide buckles.

MOBILE TOOL ORGANIZER



Maximum storage for minimum weight

Clever carrying

The tool organizer attaches to the telescopic handle to make the most of the large organizer wheels. Very practical for travelling.



Removable shoulder strap to take only as much as you need to the work site.



Large interior volume

The wheeled organizer has plenty of space to store all your tools, even the largest.



Two organizers for twice the storage space

A removable tool organizer that attaches along to the telescopic handle of the trolley organizer containing:

- ▶ 2 compartments, tool loops, 2 slots
- ▶ shoulder strap and handles to release when needed (rough terrain, stairs, hard to reach or confined spaces, etc.)

A large tool organizer on wheels containing:

- ▶ one compartment for electrical hand tools and heavy equipment with two equipment slots
- ▶ an organized storage area with tool loops and a compartment for documents or a tablet with optional protective padding.



Even with the tool organizer on top, you can access tools in the trolley organizer by opening down the front panel.

Outils Océans

ZAC de Troyalac'h • 10 rue Nicolas APPERT • 29170 Saint-Evarzec • Tel.: +33 (0)2 98 94 63 03 Fax:
+33 (0)2 98 94 68 22 • contact@outils-oceans.com • www.outils-oceans.com

CUSTOM PRODUCTS

OPEN ROPE BAGS



ANCHOR BAGS

INTERIOR STORAGE



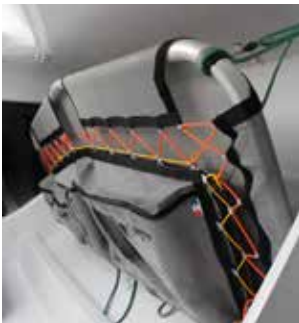
DECK HARDWARE PROTECTIONS

FENDERS



LEE CLOTHS AND BUNKS

STACKING BAGS



COVERS



THIS IS AN OVERVIEW OF SOME OF OUR CREATIONS.

DON'T SEE WHAT YOU WANT?

CONTACT US!

www.outils-oceans.com



THE BEST SOLUTIONS FOR OUTFITTING YOUR BOAT

ERGONOMIC

- *Light (when empty)*
- *Easy to use*

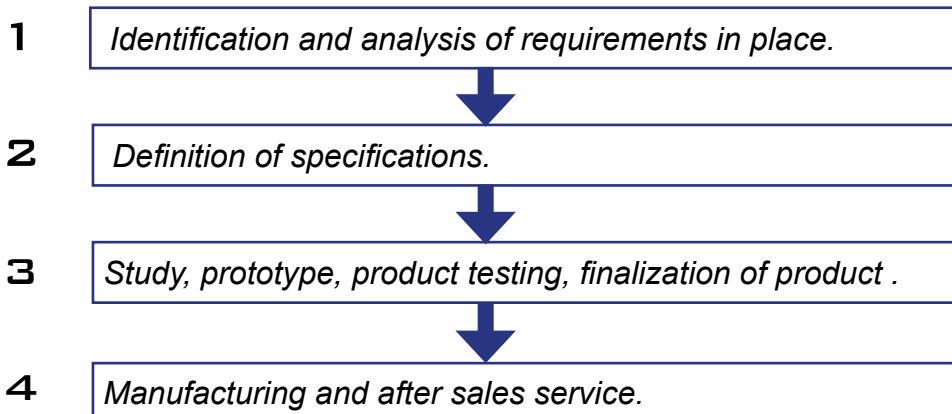
SOLID

- *Deformable and unbreakable material*
- *Resistant to corrosion, UV and waterproof...*

EFFICIENT AND INNOVATIVE

- *Materials and designs have been tested racing*
- *Development of products that facilitate navigation and life on board*

A PROFESSIONAL APPROACH



OUR TEAM IS AT YOUR SERVICE!



**Marine equipment
Department Manager
Nicolas LEBUGLE** : +33 (0)2 98 94 87 62
nicolas.lebugle@outils-oceans.com



Outils Océans is a member of FIN, the marine industry french federation since 2007.

Find the vidéo on our website in the menu «qui sommes-nous» «toutes nos vidéos» or flash the code

